

Remote Power Cycling (PowerShare™)

PowerShare is MGE's trademark for remote control of UPS output receptacles. MGE introduced this feature on International markets back in 1993 on On-Line models between 2 and 4 KVA's. This feature is standard on the current Pulsar ESV+ series. Other models with U-Talk protocol can also benefit from this feature by means of the external UM Switch module.

Power Status

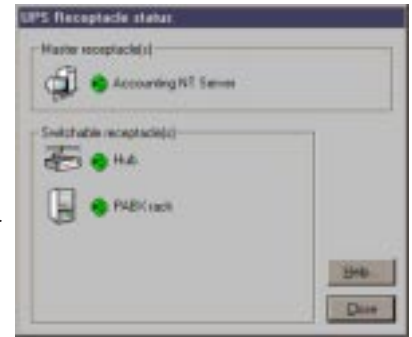
Status Benefits

- Individual identification ▶ Each receptacle can be assigned a specific icon and label for easy and customized identification
- Status warning ▶ By clicking on the UPS icon, you can know at a glance what is the power status of each device connected to the UPS (see screen below)

This ESV 8+ has 3 segments that can be controlled by PowerShare.

To access the Status screen, simply click on the UPS icon on the master screen of PSP or SP 98/WAN, or go in the [View\UPS receptacle...] menu

You can immediately see what is the status of each device connected to a receptacle. In this example, the PABX rack has been turned off. If you want to turn it on again go in the [Actions\Device control...] menu



Remote Control

Control Benefits

- Remote reboot of each device ▶ A faulty device in a locked room can be rebooted remotely without any interruption of the other devices connected to the same UPS

This ESV 5+ has 2 PowerShare output receptacles. An office switch is connected to the receptacle # 2 and has been switched off: the receptacle icon is red.

To start it on again, simply go in the [Actions\Device control...] menu and click on the Switch On button.

The server connected to the receptacle # 1 is not affected by these changes.



Automatic Power Sequences

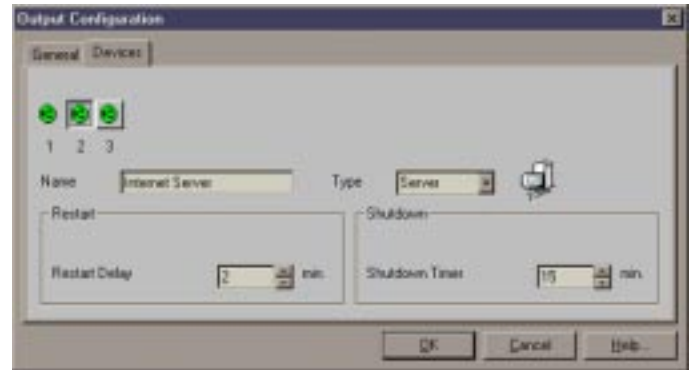
In addition to these control actions, PowerShare can be set up to perform automatic tasks either on startup, or in case of a power failure.

Automatic Actions Benefits

- Sequential startup ▶ Each output receptacle can be assigned a customized startup delay
 - ▶ This will prevent initialization problems on communication ports that may occur when several devices are all powered on at the same time
 - ▶ This may also prevent from oversizing the UPS to cope with inrush currents of heavy loads on startup
- Load shedding on battery back-up ▶ Each protected device can perform its own shutdown sequence based on an individual timer. This feature can be used to significantly increase the battery time to mission-critical applications by switching off automatically less critical loads like PCs or printers.

This screen can be accessed through the Configuration\Device configuration... menu.

The Internet server connected to the receptacle # 2 of this ESV 11+ will be automatically shutdown after 15 minutes of battery operation. On reboot, it will wait 2 minutes to restart after the main receptacle (# 1) has been switched On.



UM Switch: The Solution for Larger UPSs

For UPS series other than the Pulsar ESV+, MGE can provide the same set of features through an external module called UM Switch. This surge suppressor-like device sports 4 outlets which can all be individually managed remotely from Solution-Pac 98/WAN software.

- Up to 4 modules can be daisy-chained, giving control to 16 receptacles!
- UM Switch can also be used as a standalone product for remote reboot of faulty devices.

Note: UM Switch features IEC22 receptacles and requires special IEC to IEC power cables for proper operation. Please contact factory for more information.